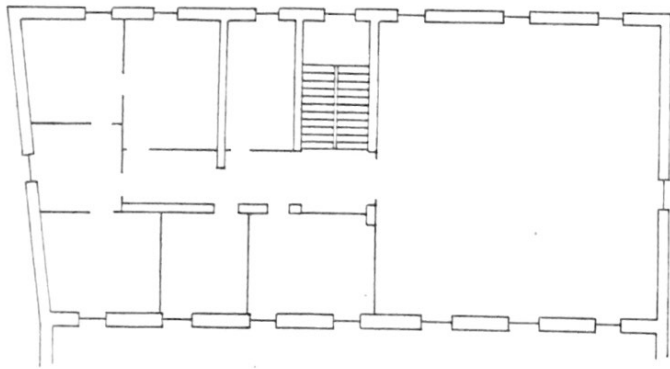
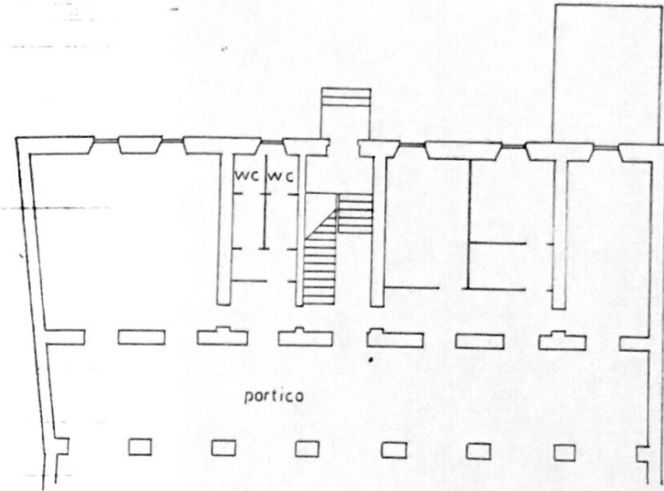


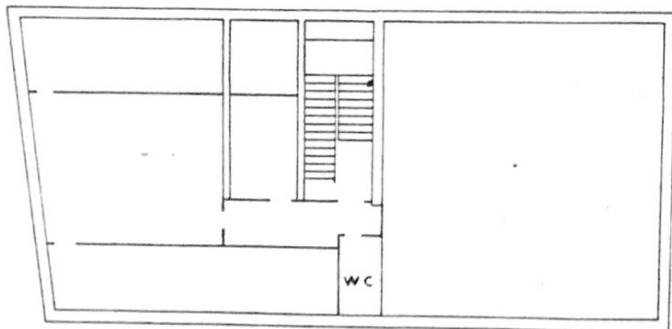
SEDE MUNICIPALE



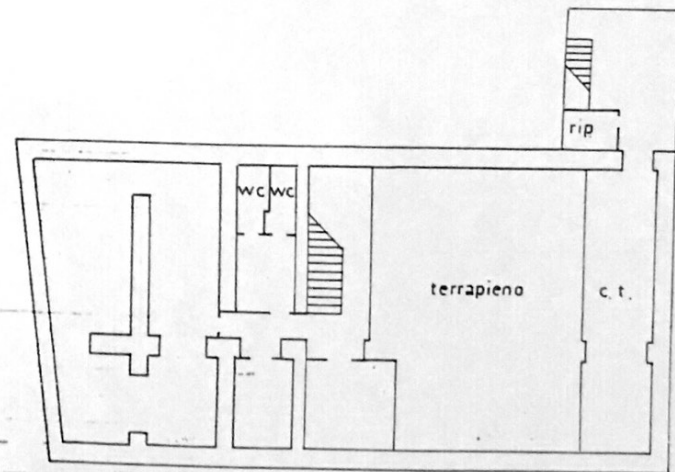
PIANTA PIANO PRIMO H=345



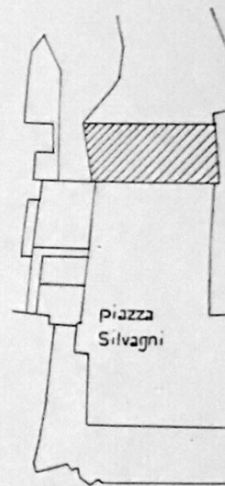
PIANTA PIANO TERRA H=402



PIANTA PIANO SECONDO Hm=240



PIANTA PIANO SOTTERRANEO H=270



Planimetria 1:2000

ORIENTAZIONE
N



SCALA DI

SPAZIO RISERVATO PER LE ANNOTAZIONI D'UFFICIO

DATA - 9 MAR 1988
PROT. N°

F 10

U. 424

Compilata dal GEOMETRA
PIVA CORRADO

Iscritto all'Albo dei GEOMETRI
collegio