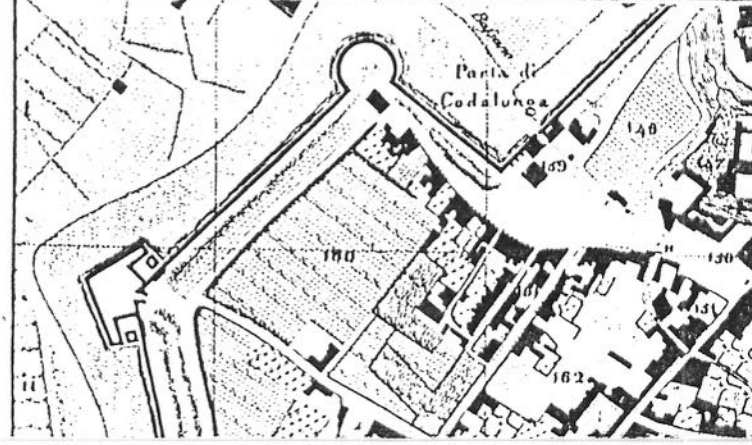
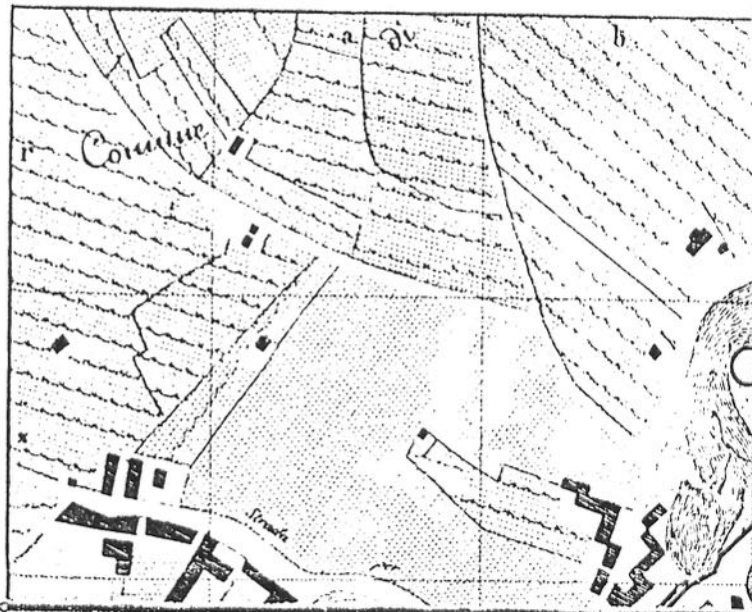
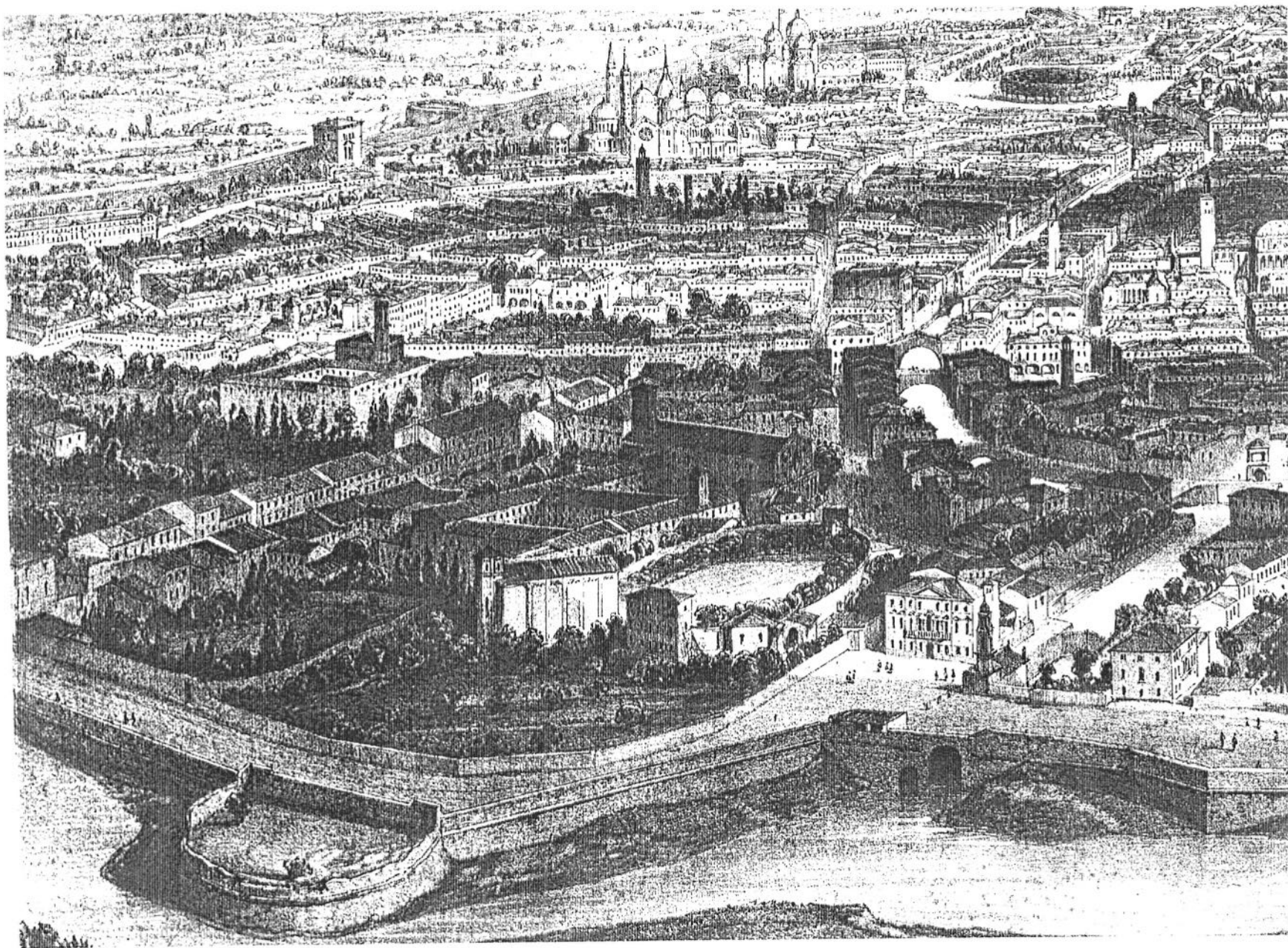


1078	1104	71	1684	1689	99	2504	2520	126	3320	3344	151	3928	3988
1105	1125	72	1690	1697	100	2521	2599	127	3345	3372	155	3989	3996
1126	1148	73	1698	1718	101	2600	2608	128	3373	3423	156	3997	4054
1149	1166	74	1719	1741	102	2609	2621	129	3454	3502	157	4055	4085
1167	1220	75	1742	1814	103	2622	2644	131	3516	3537	159	4105	4109
1221	1238	76	1815	1852	104	2645	2717	132	3538	3545	160	4110	4153
1239	1250	77	1853	1916	106	2718	2733	133	3546	3569	161	4154	4168
1251	1264	78	1917	1967	106	2734	2813	134	3570	3585	162	4169	4202
1265	1272	79	1968	2015	107	2814	2838	135	3586	3611	163	4203	4236
1293	1290	80	2016	2059	108	2839	2840	136	3612	3649	164	4237	4324
1291	1302	81	2064	2068	109	2841	2857	137	3650	3672	165	4325	4339
1303	1306	82	2069	2085	110	2858	2869	138	3673	3718	166	4340	4354
1307	1325	83	2086	2124	111	2870	2885	139	3719	3722	167	4355	4436
1326	1357	84	2128	2236	112	2886	2895	140	3723	3767	168	4437	4519

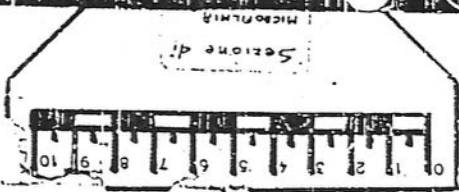


S. GIUSTINA

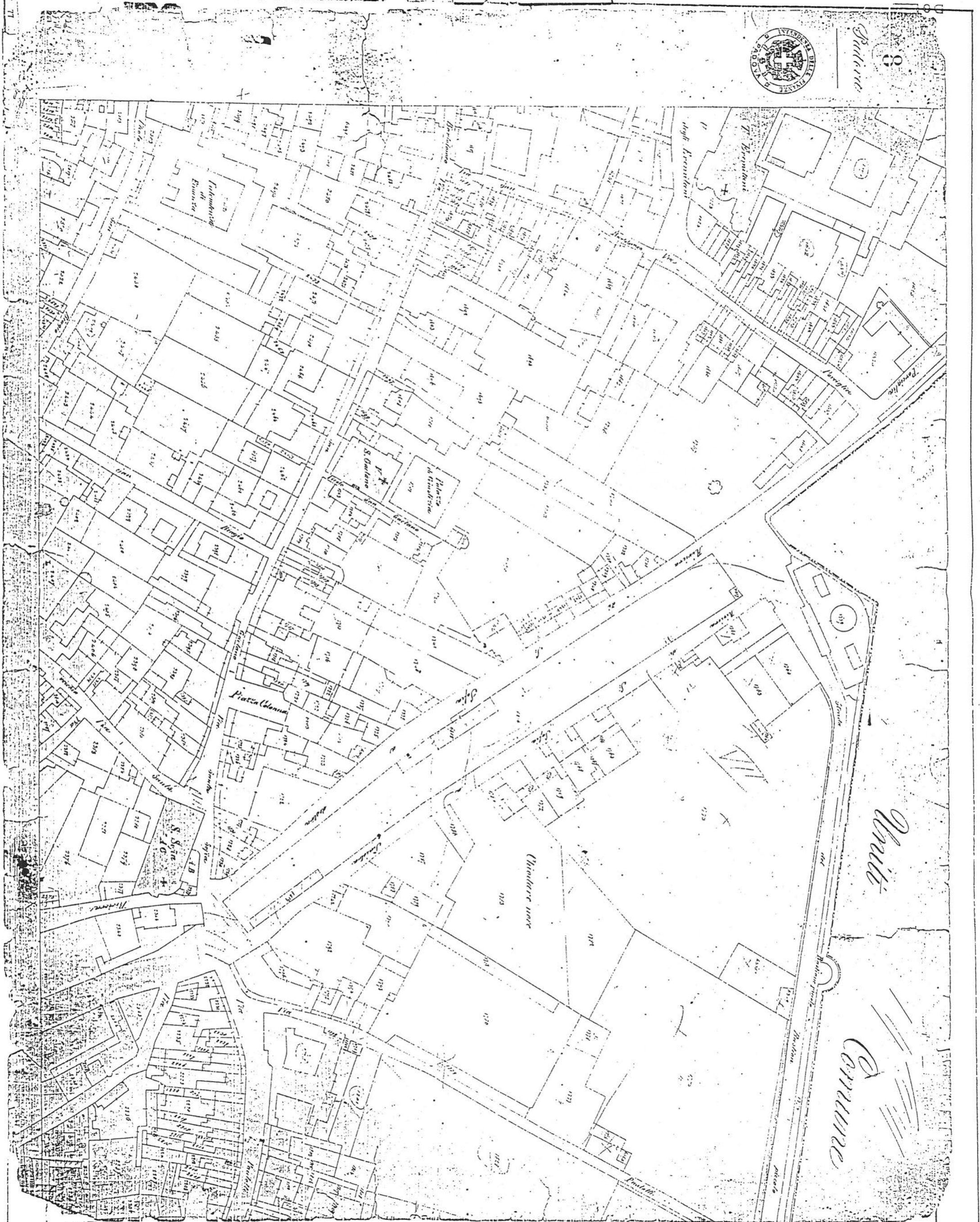




**GIARDINO MANTOVA - BENAVIDES, VENEZZE, D'AREMBERG CORINALDI, ora PROTTI, PIAZZA
EREMITANI 18, RIVIERA G.MORGAGNI s.n.
All. 9 - Fotocopia disegno prospettico di A.Guesdon, metà sec. XIX (stralcio della zona del giardino)**



8

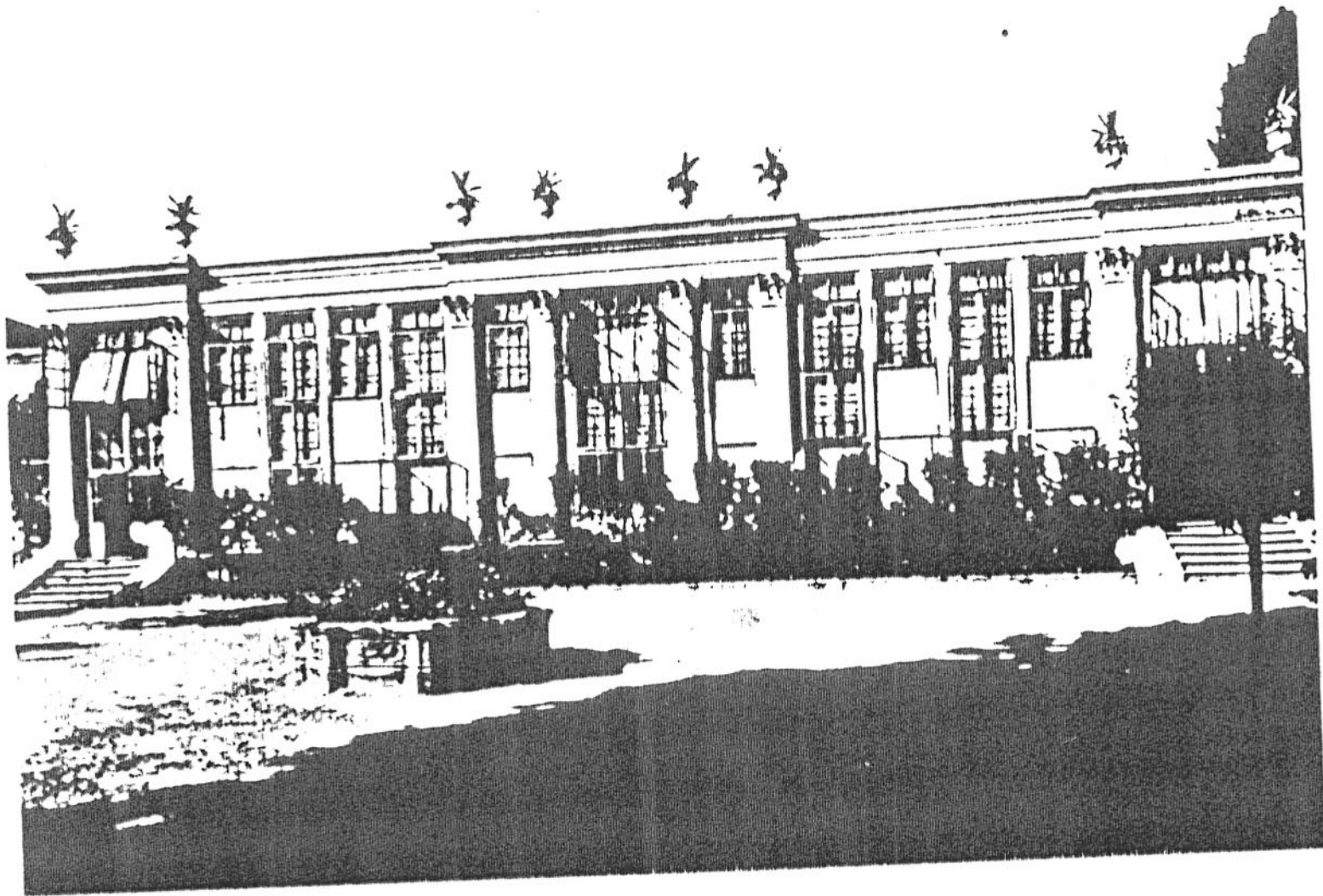


GIARDINO MANTOVA - BENAVIDES, VENEZZE, D'AREMBERG CORINALDI, ora PROTTI, PIAZZA EREMITANI 18, RIVIERA G.MORGAGNI s.n. All. 10 - Fotocopia Sezione 8 della Mappa Catasto Austriaco Stabile (Austro-Italiano), 1828 - 1845

B1

5.115

GIARDINO MANTOVA - BENAVIDES, VENEZZE, D'AREMBERG CORINALDI, ora PROTTI, PIAZZA
EREMITANI 18, RIVIERA G.MORGAGNI s.n.
All. 12 - Fotocopia Foto storica di "Serra Jappelliana" in: Sgaravatti Montesi M. Giardini a Padova, p.74



49 - Serra jappelliana.

